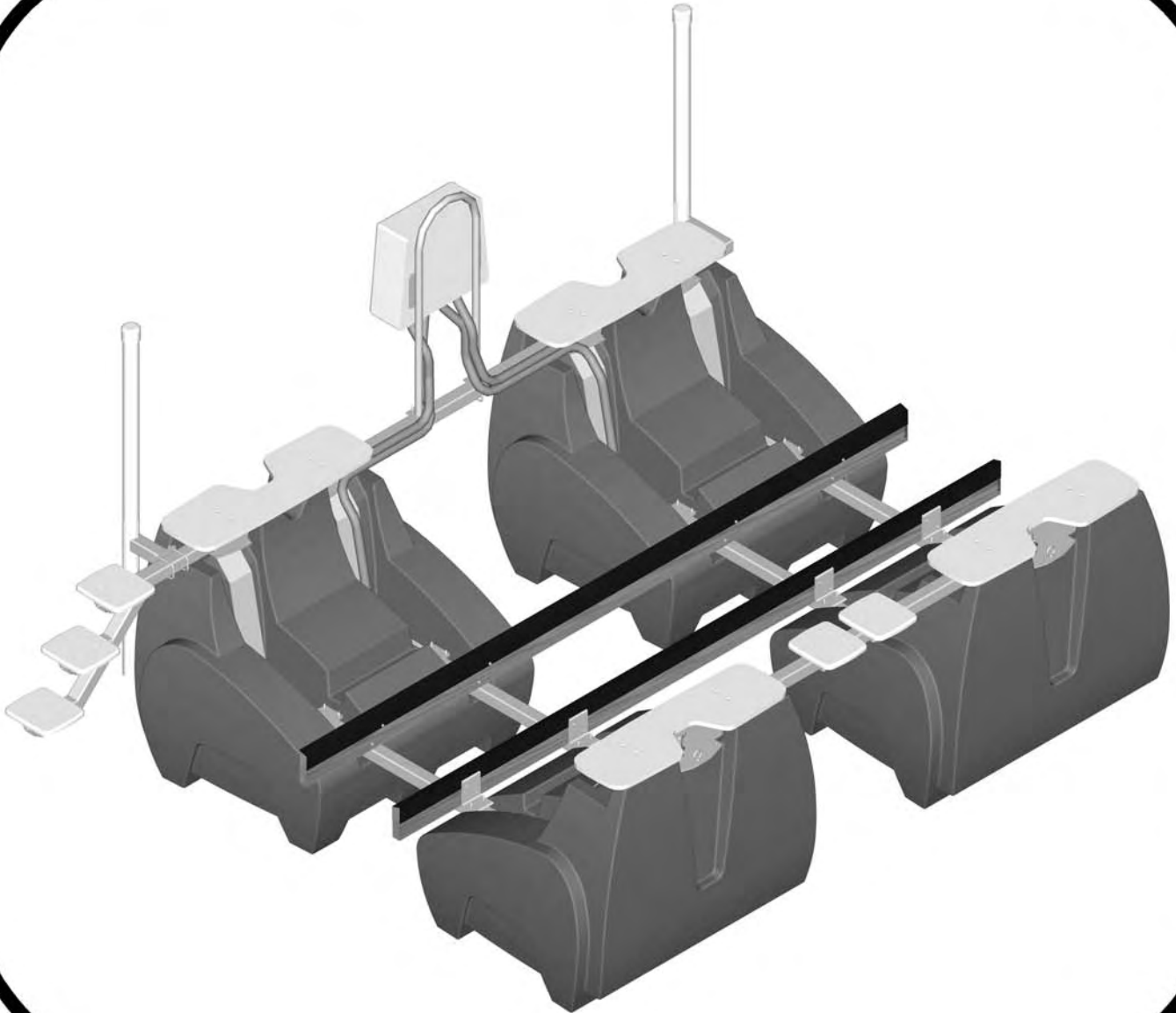


# **LAUNCH PAD**

## **Installation Manual**

*Revised 11/14/11*



[www.hi-tide.com](http://www.hi-tide.com)

4050 Selvitz Road, Fort Pierce, Florida 34981

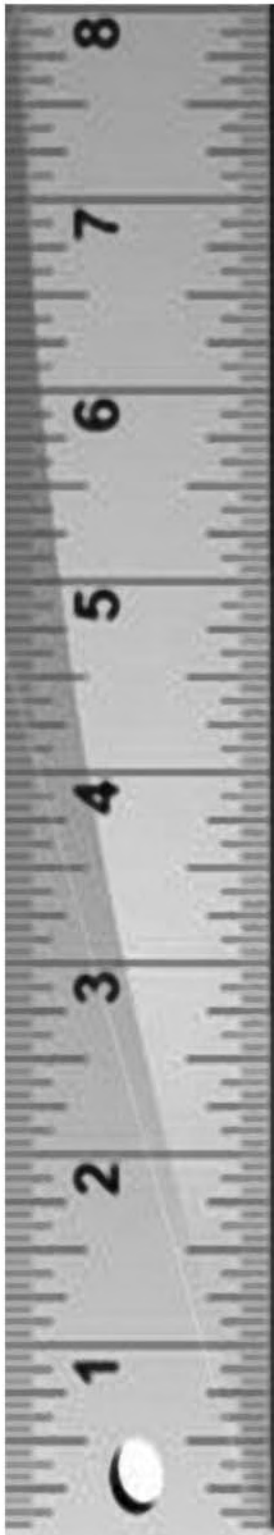
**(772) 461-4660    1-800-544-0735    Fax (772) 461-2298**

# INTRODUCTION

At Hi-Tide Sales, we take pride in bringing the most advanced, easy to use, minimum maintenance boat lift system to the market today. The installation of this lift is simplified by its lightweight design and simple operation. In the pages that follow, we will take you step-by-step through the entire installation sequence, including the lifting of the boat. We urge you to read this manual before attempting an installation.

**Before you begin...**

The Launch Pad can be assembled with two people in a single day. Review all the parts, hardware, and required tools listed below to familiarize yourself with the product before you begin to assemble and don't forget...safety first. A tub of Lanocoat is supplied with each lift to be applied the the bolt threads. You may contact our Technical Support Team to answer any questions.



## PARTS:

	QUANTITY PER CAPACITY		
	(4400)	(6600)	(8800)
(A) Polyethelyene Tanks	x4	x6	x8
(B) Top Cap	x4	x6	x8
(C) Top Plate	x4	x6	x8
(D) Top Gasket	x4	x6	x8
(E) Strap Plate	x8	x12	x16
(F) Bottom Gasket	x8	x12	x16
(G) Support Channel	x8	x12	x16
(H) Beam Strap	x16	x24	x32
(I) 70" Cross Beam	x4	x6	x8
(J-1) 74" Span Beam	x2	0	0
(J-2) 48" Span Beam	0	x4	x6
(K) Wooden Bunks	x2	x2	x2
(L) Bunk Brackets	x4	x6	x8
(M) 8" Spacer Tube	x4	x4	x4
(N) Cap Support Channel	x4	x6	x8
(O) Air Hose	x4	x6	x8
(P) PVC Stub Tube	x4	x6	x8
(Q) Hoop Pipe Assy	x1	x1	x1
(R) Pump Assy	x1	x1	x1
(S) Pump Box Housing	x1	x1	x1
(T) Side Tie Post Assy (Optional)	x2	x2	x2
(U) Tube of Grease	x1	x1	x1
(V) Long Wire Ties	x8	x12	x16
(W) Underneath Gasket	x8	x12	x16

## HARDWARE:

(1) 1/4" x 1-1/4" SS Hex Bolt	x16	x24	x80
(2) 1/4" SS Flat Washer	x32	x48	x64
(3) 1/4" SS Lock Nut	x16	x24	x32
(4) 3/8" x 3" x 4-1/2" SS U-Bolt	x10	x14	x16
(5) 3/8" X 3" x 6" SS U-Bolt	x32	x44	x56
(6) 3/8" SS Lock Washer	x100	x148	x196
(7) 3/8" SS Hex Nut	x100	x148	x196
(8) 1/2" x 5" SS Flat Socket Cap MS	x16	x24	x32
(9) 1/2" SS Tie Off Ring	x4	x6	x8
(10) 1/2" SS Flat Washer	x4	x6	x8
(11) 1/2" SS Lock Jam Nut	x4	x6	x8
(12) 1/2" I.D. Cone Spacer	x16	x24	x32
(13) 1/2" x 2" SS Flat washer	x16	x24	x32
(14) 1/2" SS Lock Nut	x16	x24	x32
(15) #20 Hose Clamp	x8	x12	x16
(16) 1" White Dome Plug	x16	x24	x32
(17) 3/8" x 3" SS Hex Bolt	x16	x24	x32
(18) 3/8" SS Flat Washer	x100	x148	x196
(19) 1/2" SS Jam Nut	x16	x24	x32

## REQUIRED TOOLS AND MATERIALS:

Hammer

Phillips Screwdriver

Slotted Screwdriver

7/16" Socket Wrench

9/16" Socket Wrench

3/4" Socket Wrench

5/16" Hex Key

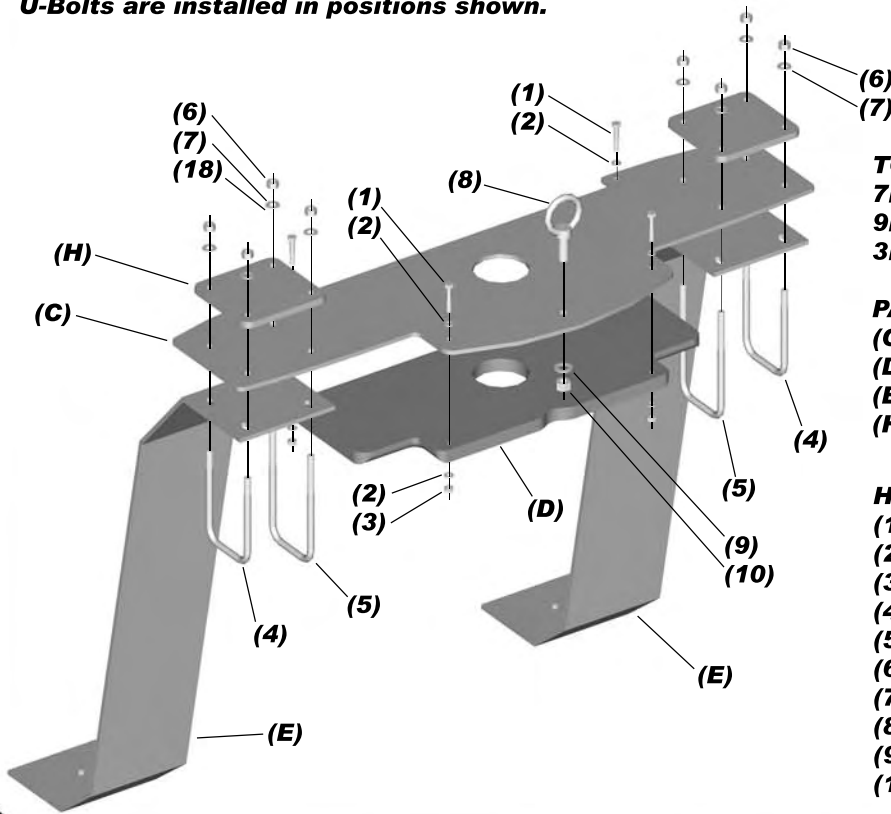
Thread Sealant

Cordless Drill with 7/16" Drill Bit

Safety Glasses

Work Gloves

**STEP 1: STRAP ASSEMBLY** (Repeat this assembly for each tank supplied) Make certain long and short U-Bolts are installed in positions shown.



**TOOLS REQUIRED**

7/16" Socket Wrench  
9/16" Socket Wrench  
3/4" Socket Wrench

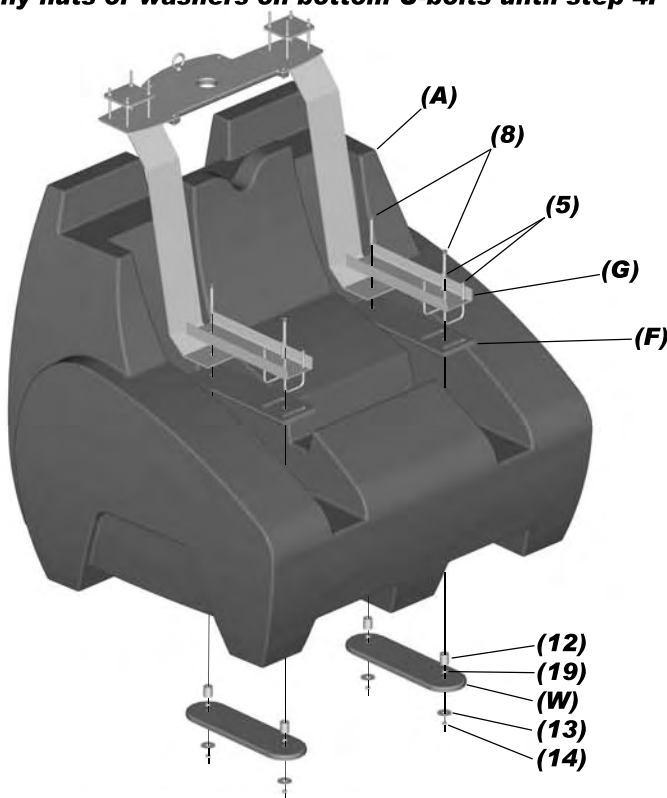
**PARTS REQUIRED PER ASSEMBLY:**

(C) Top Plate	x1
(D) Top Gasket	x1
(E) Strap Plate	x2
(H) Beam Strap	x2

**HARDWARE REQUIRED PER ASSEMBLY:**

(1) 1/4" x 1-1/4" SS Hex Bolt	x4
(2) 1/4" SS Flat Washer	x8
(3) 1/4" SS Lock Nut	x4
(4) 3/8" x 3" x 4-1/2" SS U-Bolt	x2
(5) 3/8" x 3" x 6" SS U-Bolt	x2
(6) 3/8" SS Lock Washer	x8
(7) 3/8" SS Hex Nut	x8
(8) 1/2" x 4" SS Tie Off Ring	x1
(9) 1/2" SS Flat Washer	x1
(10) 1/2" SS Lock Jam Nut	x1

**STEP 2: ATTACH STRAP ASSEMBLY TO TANK** (Repeat this for each tank) Roll tank on back side to insert hardware from underneath. Make certain U-bolts protrude from support channel as shown. Do not install any nuts or washers on bottom U-bolts until step 4.



**Note:** pre-assembling all parts to the point of the cone spacer (12) and jam nut (19) may assist in assembly of this step. The Cone spacers will fit through the tank slot when installed from above.

**TOOLS REQUIRED**

3/4" Socket Wrench  
5/16" Hex Key

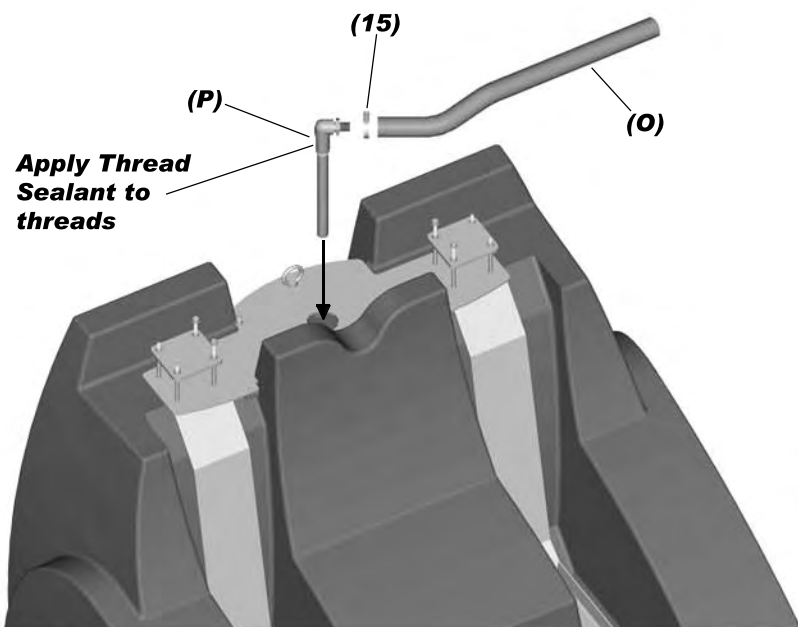
**PARTS REQUIRED PER ASSEMBLY:**

(A) Polyethelyene Tanks	x1
(F) Bottom Gasket	x2
(G) Support Channel	x2
(W) Underneath Gasket	x2

**HARDWARE REQUIRED PER ASSEMBLY:**

(5) 3/8" x 3" x 6" SS U-Bolt	x4
(8) 1/2" x 5" Flat Socket Cap MS	x4
(12) 1/2" I.D. Cone Spacer	x4
(13) 1/2" x 2" SS Flat Washer	x4
(14) 1/2" SS Lock Nut	x4
(19) 1/2" SS Jam Nut	x4

**STEP 3: INSTALL STUB TUBE AND HOSE** (Repeat for each tank) Orient all the floats in a similar fashion as pictured on front cover. Determine which side will be the eventual dock side and the location of the Pump Box. For the 4,400, the short hoses are used on the dock side/pump box side. The long hoses are used on the opposite side. Refer to the diagram in step nine to help with hose lengths and location. The Stub Tubes are threaded into the top of the Tanks and should be slightly turned towards the center of the slip to allow the air hose to work around the u-bolts. Apply Thread Sealant to the Stub Tubes prior to installation.



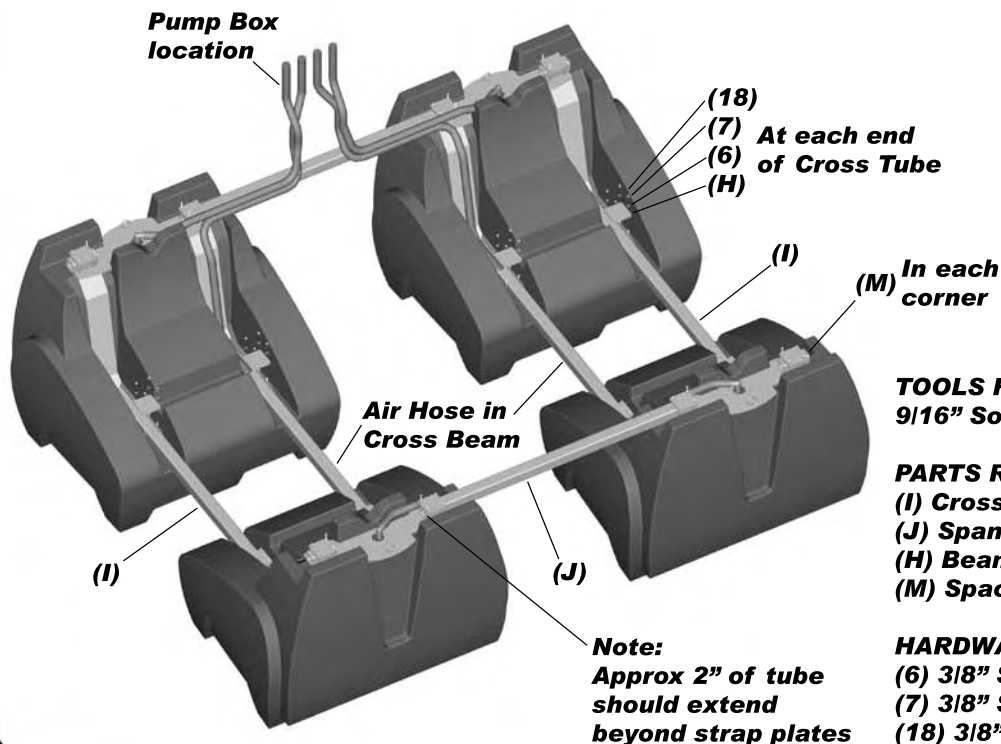
**TOOLS REQUIRED**  
Slotted Screwdriver  
Thread Sealant

**PARTS REQUIRED PER ASSEMBLY:**

(P) Stub Tube x1  
(O) Air Hose x1

**HARDWARE REQUIRED PER ASSEMBLY:**  
(15) #20 Hose Clamp x1

**STEP 4: ATTACH CROSS BEAMS AND SPAN BEAMS** The long air hoses need to be inserted through the cross beams towards the eventual location of the pump box. 4400 capacity shown; 6600 and 8800 are connected in the same fashion with the spacer tubes always used in the outside corners.



**TOOLS REQUIRED:**  
9/16" Socket Wrench

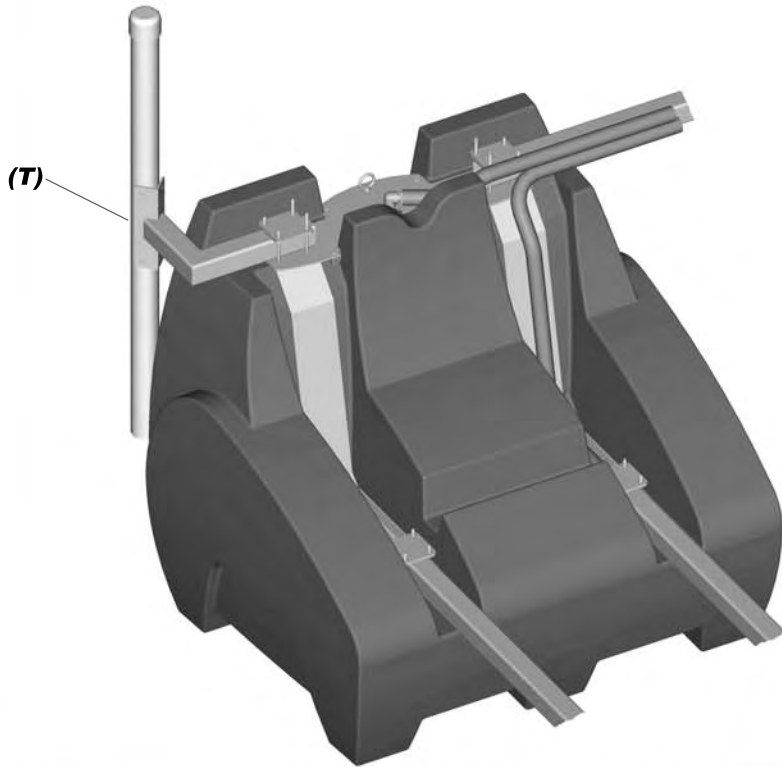
**PARTS REQUIRED:**

	(4400)	(6600)	(8800)
(I) Cross Beam	x4	x6	x8
(J) Span Beam	x2	x4	x6
(H) Beam Strap	x8	x12	x16
(M) Spacer Tube	x4	x4	x4

**HARDWARE REQUIRED:**

	(4400)	(6600)	(8800)
(6) 3/8" SS Lock Washer	x32	x48	x64
(7) 3/8" SS Hex Nut	x32	x48	x64
(18) 3/8" SS Flat Washer	x32	x48	x64

**STEP 5: INSTALL SIDE TIE POST GUIDE** The Side Tie Post Guide is an optional mounting bracket for the LPL and may have been upgraded and/or not be part of your kit. The Side Tie Post would replace any of the spacer tubes installed in the corners from the previous step and face towards the dock.

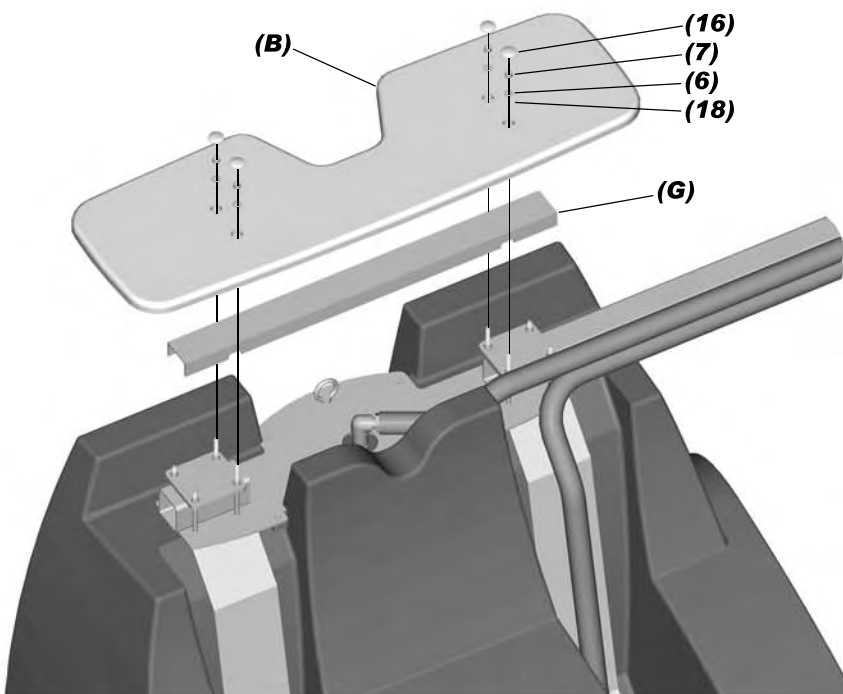


**TOOLS REQUIRED**  
9/16" Socket Wrench

**OPTIONAL PARTS REQUIRED:**  
(T) Side Tie Post Guide x2

**HARDWARE REQUIRED:**  
None

**STEP 6: INSTALL SUPPORT CHANNEL AND TOP CAP** The Support Channel is notched to fit over the hex nuts of the long U-Bolts. The Top Cap will slip over the U-Bolts and rest directly on the Support Channel. Lightly tap in the 1" White Dome Plug to hide the mounting hardware.

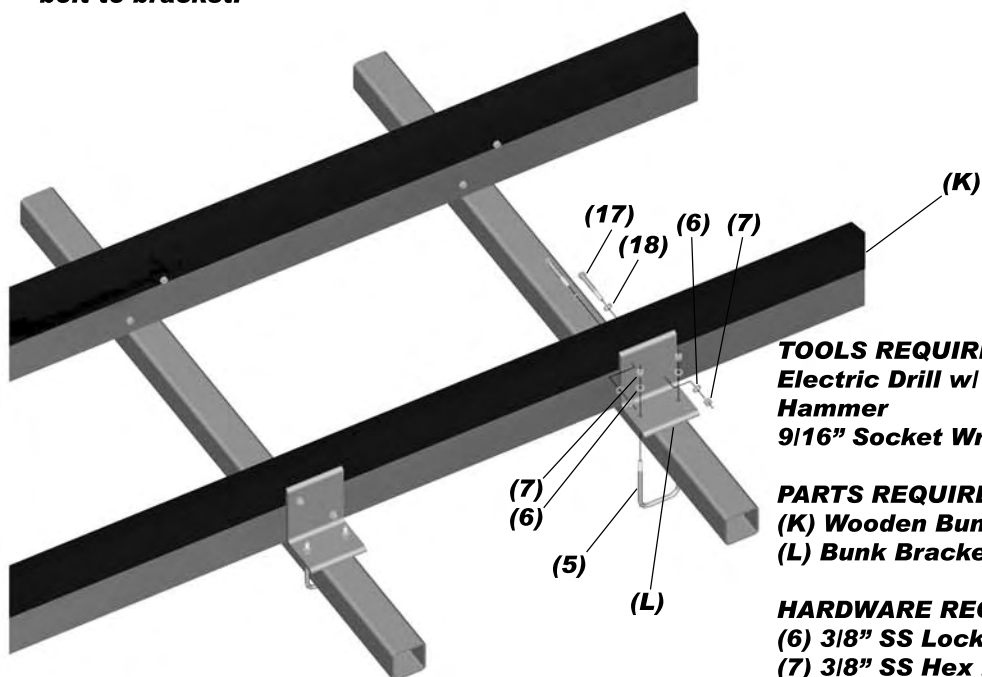


**TOOLS REQUIRED:**  
9/16" Socket Wrench  
Hammer

**PARTS REQUIRED:** (4400) (6600) (8800)  
(G) Support Channel x4 x6 x8  
(B) Top Cap x4 x6 x8

**HARDWARE REQUIRED:**  
(6) 3/8" SS Lock Washer x16 x24 x32  
(7) 3/8" SS Hex Nut x16 x24 x32  
(18) 3/8" Flat Washer x16 x24 x32  
(16) 1" White Dome Plug x16 x24 x32

**STEP 7: INSTALL BUNKS** Attach Bunk Brackets to cross beams with SS U-Bolt. Center Wooden Bunk bow to stern. Using the holes in the brackets as a guide, drill a 7/16" hole in the Wooden Bunk and through bolt to bracket.



**TOOLS REQUIRED**

Electric Drill w/ 7/16" drill bit

Hammer

9/16" Socket Wrench

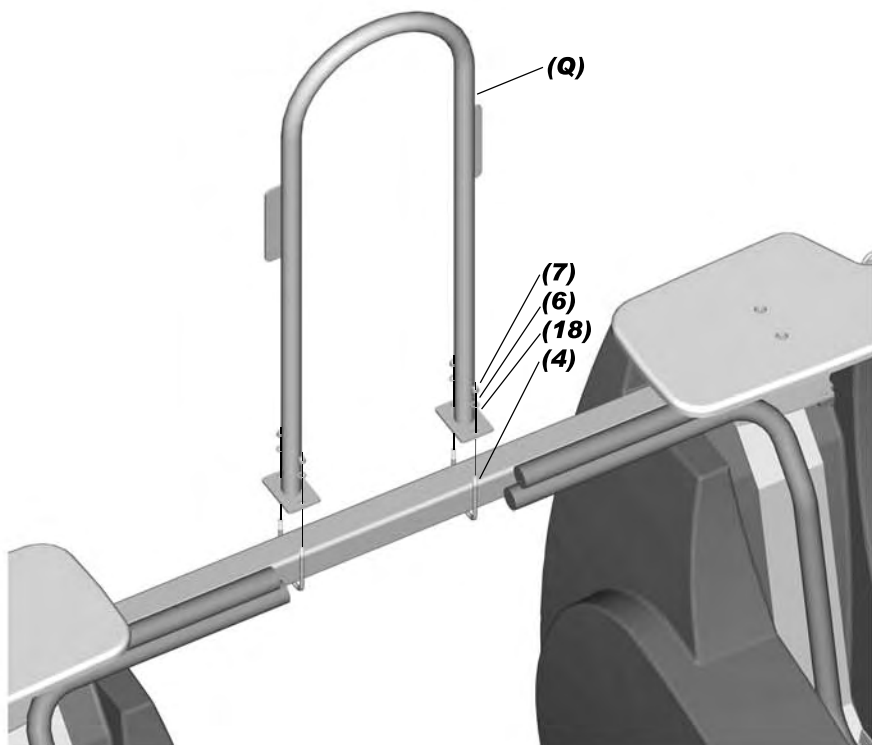
**PARTS REQUIRED:**

	(4400)	(6600)	(8800)
(K) Wooden Bunks	x2	x2	x2
(L) Bunk Brackets	x8	x12	x16

**HARDWARE REQUIRED:**

(6) 3/8" SS Lock Washer	x32	x48	x64
(7) 3/8" SS Hex Nut	x32	x48	x64
(18) 3/8" SS Flat Washer	x32	x48	x64
(17) 3/8" X 3" SS Hex Bolt	x16	x24	x32
(5) 3/8" x 3" x 6" SS U-Bolt	x8	x12	x16

**STEP 8: INSTALL HOOP PIPE ASSEMBLY** Attach Hoop Pipe Assembly in the location of the Pump Box. The side of the assembly that has the brackets flush with the hoop is the side that will hold the Pump Box. This side must face away from the bunks.



**TOOLS REQUIRED:**

9/16" Socket Wrench

**PARTS REQUIRED:**

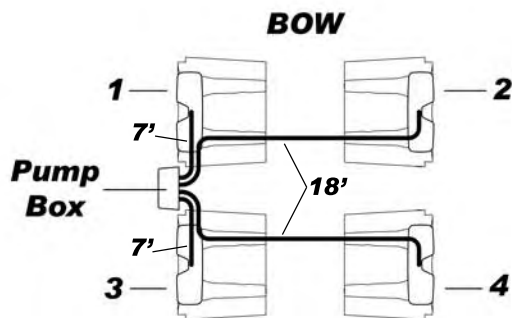
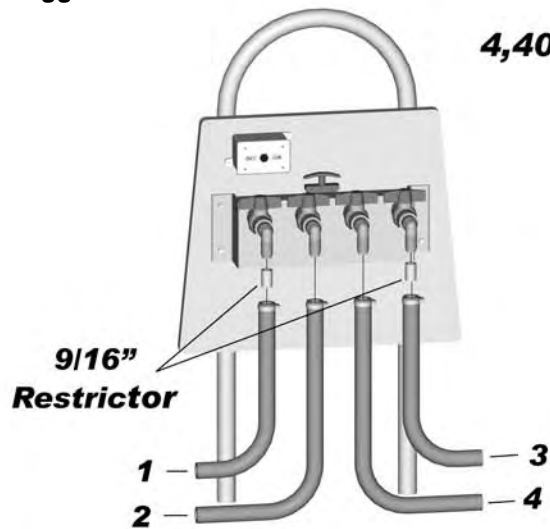
(Q) Hoop Pipe Assy.	x1
---------------------	----

**HARDWARE REQUIRED:**

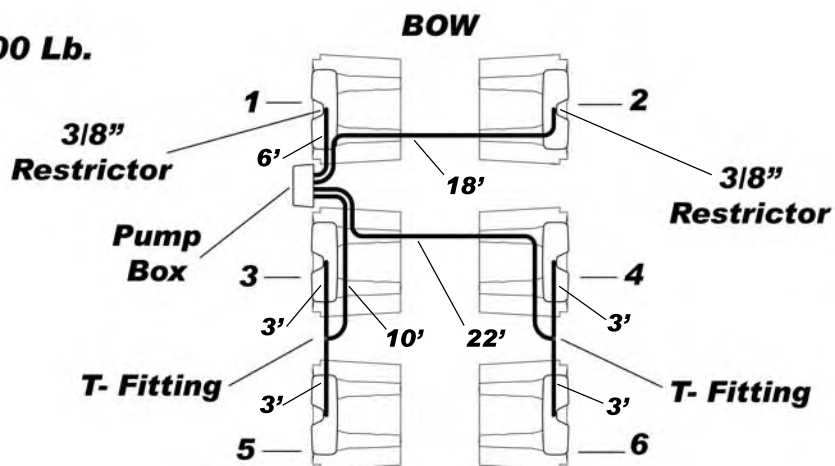
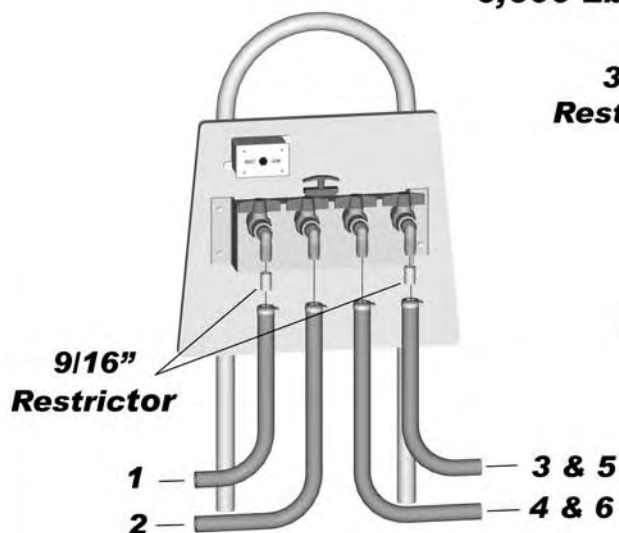
(4) 3/8" x 3" x 4-1/2" SS U-bolt	x2
(6) 3/8" SS Lock Washer	x4
(7) 3/8" SS Hex Nut	x4
(18) 3/8" SS Flat Washer	x4

**STEP 9: ATTACH HOSES TO PUMP BOX.** Attach hoses to the pump box as shown per capacity. It is very important to install the hose restrictors as shown in each diagram in which the 9/16" restrictors are always used for the tanks that are on the same side as the pump box. The 3/8" restrictors are only used with the 6,600 lb. and are installed in the hoses at the bow of the boat. Hose lengths below are suggested for standard width lifts and may not apply your lift. Contact Hi-Tide Sales as necessary.

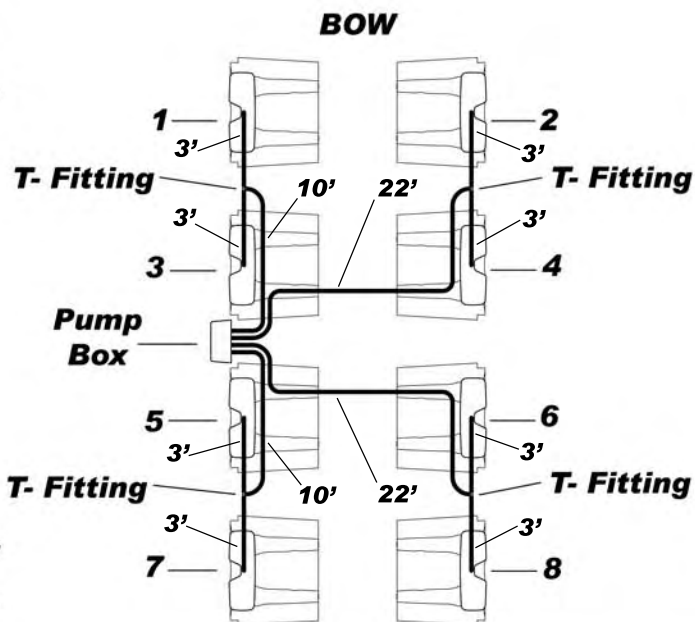
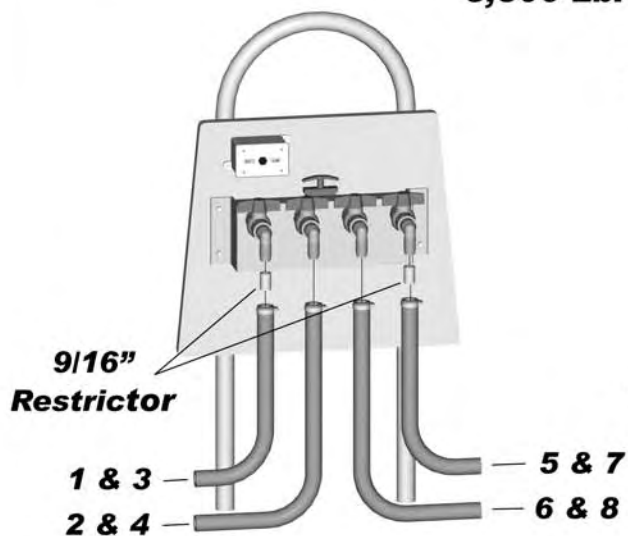
**4,400 Lb.**



**6,600 Lb.**

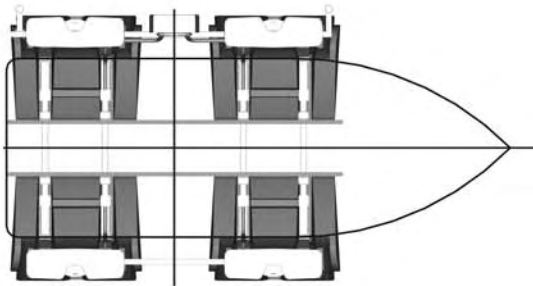


**8,800 Lb.**

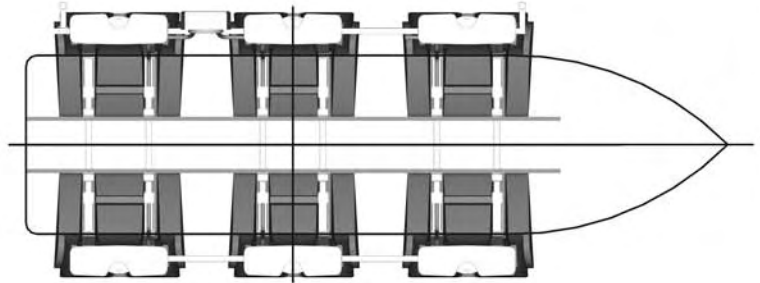


## BOAT FITMENT

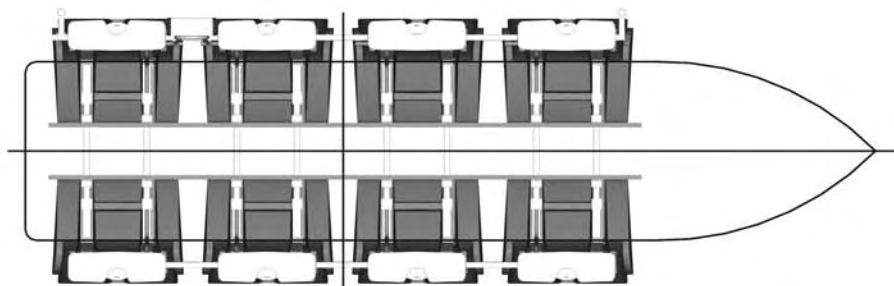
Take care to clear shafts, thru-hull fittings, chines, etc. Keel of boat must not rest on cross beam and should clear beam by at least one inch. Center of gravity of boat must be in center of lift; bow to stern and port to starboard. This will evenly distribute the load over the lift and maintain the appearance of the lift floating level. Custom boat supports for catamarans, pontoons, etc. are available from Hi-Tide Sales



4400 LPL  
CENTER OF GRAVITY



6600 LPL  
CENTER OF GRAVITY



8800 LPL  
CENTER OF GRAVITY

## HELPFUL HINTS

- \* Tank valves should always be opened or closed simultaneously when operating.
- \* Installation of a Hi-Tide dock ladder may assist in the boarding of the vessel.

## IMPORTANT NOTES TO THE ULTIMATE USER

It is the responsibility of the ultimate user to insure that:

- 1) The installation is completed according to the manufacturer's recommendations.
  - 2) The ultimate user understands how to operate in a safe manner.
  - 3) The ultimate user acknowledges the need for regular inspection of the lifting equipment.
  - 4) The ultimate user is informed and understands all safety and warning labels affixed to the equipment.
- No alterations or modifications may be made to the LAUNCH PAD equipment without the expressed written consent of Hi-Tide Sales, Inc. Re-installation, adjusting the bunks, and or adjusting the tank beam spacing of the LAUNCH PAD equipment must be performed to the standards set forth by Hi-tide Sales, Inc. It is the obligation of the ultimate user to inform any operators of the equipment of the above conditions. Owners Manuals and Safety Warning Decals are available on request from Hi-Tide Sales, Inc.